



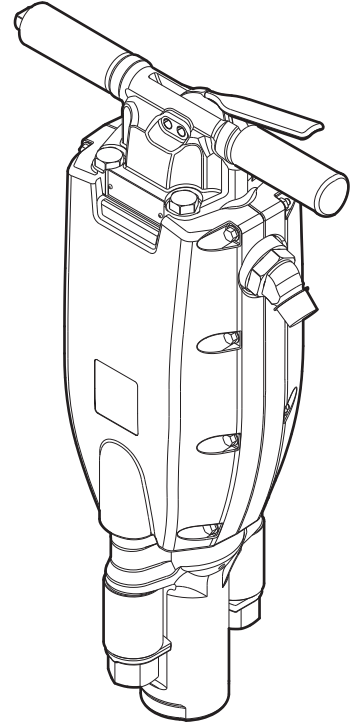
**Chicago  
Pneumatic**

Construction Equipment & Supply Company \* 12650 West 64th Avenue; Unit E248 \* Arvada, Colorado 80004  
Telephone: (303) 431-9929 \* FAX: (303) 425-5792 \* E-Mail: coeqs@hotmail.com \* Website: sand-blasters.net

## **Spare parts list**

### **Handheld pneumatic spike drivers**

### **CP 1290 S SPDR**



**CONSTRUCTION EQUIPMENT & SUPPLY COMPANY**

**12650 West 64th Avenue; Unit E248**

**Arvada, Colorado 80004**

Telephone: (303) 431-9929 FAX: (303) 425-5792 E-Mail: COEQS@hotmail.com

Websites: [www.sand-blasters.net](http://www.sand-blasters.net) & [www.coeqs.com](http://www.coeqs.com)

**CONSTRUCTION EQUIPMENT & SUPPLY COMPANY**  
**12650 West 64th Avenue; Unit E248**  
**Arvada, Colorado 80004**  
Telephone: (303) 431-9929 FAX: (303) 425-5792 E-Mail: COEQS@hotmail.com  
Websites: [www.sand-blasters.net](http://www.sand-blasters.net) & [www.coeqs.com](http://www.coeqs.com)

# Contents

**General information** ..... 5

**Spare parts list** ..... 6

    CP 1290 S SPDR ..... 6

**Accessories** ..... 8

    Hose rolls ..... 8

    Pre-mounted universal hoses with claw couplings ..... 8

    Water separator ..... 9

    Lubricator ..... 9

    CP airolene plus tool oil ..... 9

**CONSTRUCTION EQUIPMENT & SUPPLY COMPANY**

**12650 West 64th Avenue; Unit E248**

**Arvada, Colorado 80004**

Telephone: (303) 431-9929 FAX: (303) 425-5792 E-Mail: COEQS@hotmail.com

Websites: [www.sand-blasters.net](http://www.sand-blasters.net) & [www.coeqs.com](http://www.coeqs.com)

**CONSTRUCTION EQUIPMENT & SUPPLY COMPANY**

**12650 West 64th Avenue; Unit E248**

**Arvada, Colorado 80004**

Telephone: (303) 431-9929 FAX: (303) 425-5792 E-Mail: COEQS@hotmail.com

Websites: [www.sand-blasters.net](http://www.sand-blasters.net) & [www.coeqs.com](http://www.coeqs.com)

## General information

This spare parts list applies to the following:

Part number	Description
8900 0030 43	Handheld pneumatic spike driver CP 1290 S SPDR

Use only authorized parts. Any damage or malfunction caused by the use of unauthorized parts is not covered by Warranty or Product Liability. Any unauthorized use or copying of the contents or any part thereof is prohibited. This applies in particular to trademarks, model denominations, part numbers, and drawings.

### Instructions for use

This spare parts list contains no safety regulations and is merely intended to assist in the ordering of spare parts.

For information about operating, servicing, or repairing, the relevant Safety and operating instructions must be consulted at all costs.

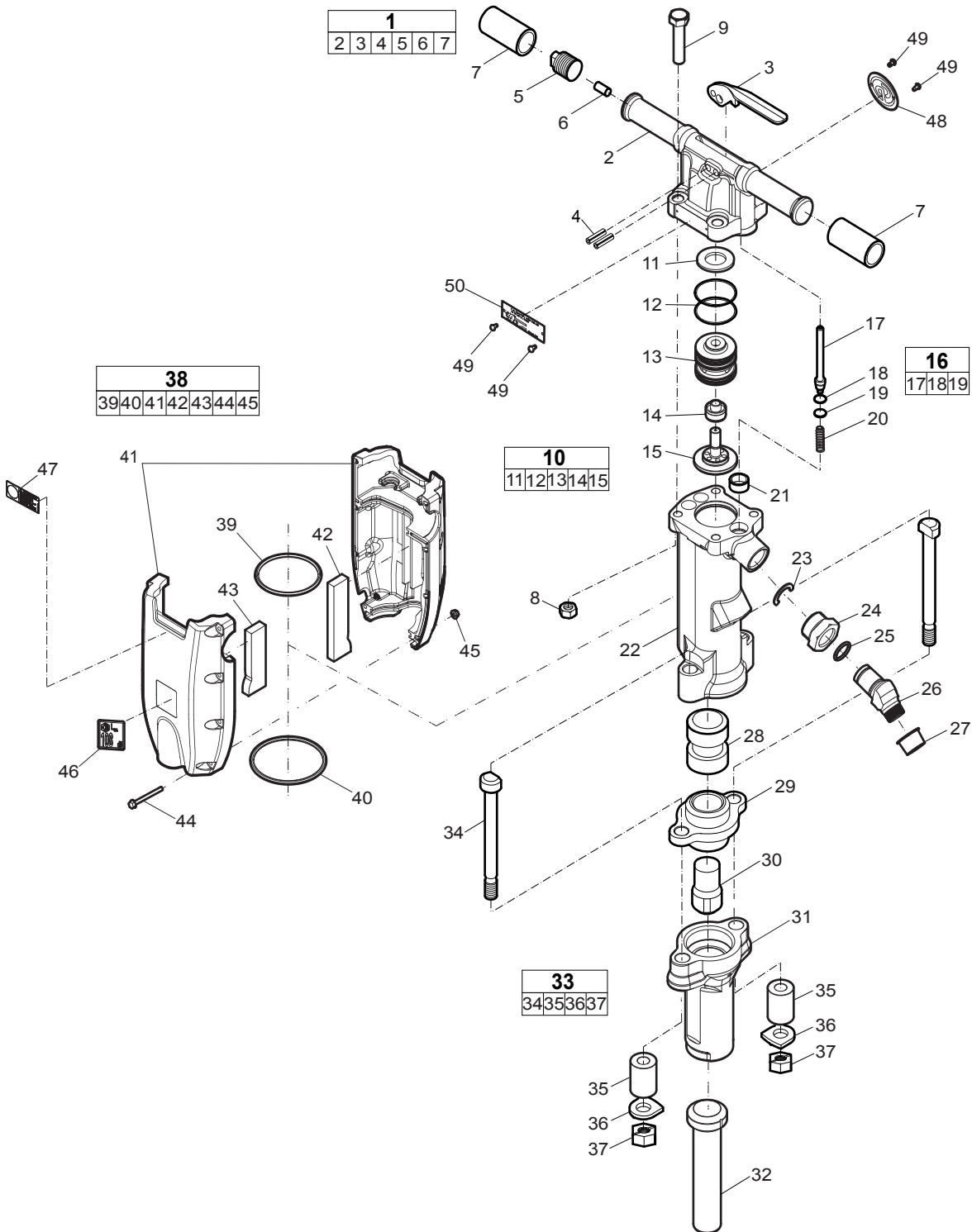
Please observe the safety instructions listed in the relevant Safety and operating instructions!

**CONSTRUCTION EQUIPMENT & SUPPLY COMPANY**  
**12650 West 64th Avenue; Unit E248**  
**Arvada, Colorado 80004**  
Telephone: (303) 431-9929 FAX: (303) 425-5792 E-Mail: COEQS@hotmail.com  
Websites: [www.sand-blasters.net](http://www.sand-blasters.net) & [www.coeqs.com](http://www.coeqs.com)

# Spare parts list

## CP 1290 S SPDR

Construction Equipment & Supply Company \* 12650 West 64th Avenue; Unit E248 \* Arvada, Colorado 80004  
 Telephone: (303) 431-9929 \* FAX: (303) 425-5792 \* E-Mail: coeqs@hotmail.com \* Website: sand-blasters.net



**CONSTRUCTION EQUIPMENT & SUPPLY COMPANY**  
 12650 West 64th Avenue; Unit E248  
 Arvada, Colorado 80004  
 Telephone: (303) 431-9929 FAX: (303) 425-5792 E-Mail: COEQS@hotmail.com  
 Websites: www.sand-blasters.net & www.coeqs.com

No.	Description	Remark	Quantity	Part number
<b>1(2-7)</b>	<b>Backhead, complete</b>		1	3303 0053 70
2	Backhead		1	-
3	Trigger		1	F814 725
4	Spring pin		2	R133 433
5	Plug - oil		1	R075 031
6	Oil wick		1	C036 901
7	Rubber grip		2	3303 0052 76
8	Nut		4	0261 1099 53
9	Screw	M14 x 60 mm 8.8	4	0147 1959 60
<b>10(11-15)</b>	<b>Valve case, complete</b>		1	R122 977
11	Washer	PU	1	R085 259
12	O-ring		2	P083 094
13	Case - valve		1	R092 904
14	Valve		1	R122 975
15	Guide - valve		1	R122 976
<b>16(17-19)</b>	<b>Valve - throttle, complete</b>		1	R092 894
17	Valve - throttle		1	-
18	Seal - throttle valve		1	R098 368
19	Ring - valve seal retaining		1	R098 369
20	Spring - throttle valve		1	R005 717
21	Seal - cylinder		1	R047 965
22	Cylinder		1	3303 0052 85
23	Lock washer		1	3310 1059 00
24	Swivel nut		1	3310 1044 00
25	O-ring		1	0663 2126 00
26	Air inlet swivel		1	3303 0050 12
27	Plug	Transport protection. Remove before use.	1	-
28	Piston		1	R000 127
29	Bushing - anvil block		1	R092 907
30	Block - anvil		1	R096 123
31	Fronthead		1	R043 644
32	Block - driving		1	R043 649
<b>33(34-37)</b>	<b>Side bolt, complete</b>		1	3303 0053 74
34	Bolt - fronthead		2	F037 790
35	Buffer	PU	2	3303 0053 13
36	Lock washer - fronthead bolt		2	R096 059
37	Nut - fronthead bolt		2	F037 789
<b>38(39-45)</b>	<b>Muffler, complete</b>		1	3303 0053 77
39	O-ring	ø94.1 x 5.7 mm ø3.70 x 0.22 in.	1	0663 2146 00
40	O-ring	ø109.1 x 5.7 mm ø4.30 x 0.22 in.	1	0663 2149 00
41	Muffler		1	3303 0053 20
42	Separation wall		1	3303 0052 97
43	Separation wall		1	3303 0052 98
44	Flange screw		8	0147 3000 32
45	Flange nut		8	9232 0207 50
46	Label	Sound power level 111 dB	1	H418 4044
47	Label	Safety	1	3310 1602 00
48	Product label	"CP"	1	3303 0053 10
49	Screw		4	P081 333
50	Data plate		1	-



## Accessories

### Hose rolls

#### Metric

Description	Inner diameter (mm)	Thickness (mm)	Maximum working pressure (bar)	Length of roll (m)	Weight (kg)	Part number
Red-X hose roll	19	2.0	20	60	11	8900 0050 10
Red-X hose roll	19	2.0	20	100	18	8900 0050 11
Red-X hose roll	19	2.0	20	200	36	8900 0050 12
Red-X hose roll	25	2.5	20	60	15	8900 0050 20
Red-X hose roll	25	2.5	20	100	25	8900 0050 21
Red-X hose roll	25	2.5	20	200	50	8900 0050 22

#### Imperial

Description	Inner diameter (in.)	Thickness (in.)	Maximum working pressure (psi)	Length of roll (ft)	Weight (lb)	Part number
Red-X hose roll	¾	⅝	290	195	24.3	8900 0050 10
Red-X hose roll	¾	⅝	290	325	39.7	8900 0050 11
Red-X hose roll	¾	⅝	290	650	79.4	8900 0050 12
Red-X hose roll	1	⅜	290	195	33.1	8900 0050 20
Red-X hose roll	1	⅜	290	325	55.1	8900 0050 21
Red-X hose roll	1	⅜	290	650	110.2	8900 0050 22

### Pre-mounted universal hoses with claw couplings

#### Metric

Description	Inner diameter (mm)	Thickness (mm)	Maximum working pressure (bar)	Length of roll (m)	Weight (kg)	Part number
Red-X universal hose	19	2.0	20	20	4.5	8900 0050 09
Red-X universal hose	25	2.5	20	20	6.0	8900 0050 23

#### Imperial

Description	Inner diameter (in.)	Thickness (in.)	Maximum working pressure (psi)	Length of roll (ft)	Weight (lb)	Part number
Red-X universal hose	¾	⅝	290	50	8.8	8900 0050 08
Red-X universal hose	1	⅜	290	50	11.0	8900 0050 24

**CONSTRUCTION EQUIPMENT & SUPPLY COMPANY**  
 12650 West 64th Avenue; Unit E248  
 Arvada, Colorado 80004  
 Telephone: (303) 431-9929 FAX: (303) 425-5792 E-Mail: COEQS@hotmail.com  
 Websites: www.sand-blasters.net & www.coeqs.com



## Water separator

### Metric

Description	Hose connection (mm)	Air flow (l/s)	Weight (kg)	Part number
Water separator (¾ in. BSP)	20	61	0.8	8900 0050 00

### Imperial

Description	Hose connection (in.)	Air flow (foot <sup>3</sup> /min)	Weight (lb)	Part number
Water separator (¾ in. NPT)	¾	130	1.8	8900 0050 01

## Lubricator

### Metric

Description	Hose connection (mm)	Air flow (l/s)	Oil volume (l)	Weight (kg)	Part number
Lubricator 1300 (1 in. BSP)	25	15-140	1.3	3	8900 0050 02

### Imperial

Description	Hose connection (in.)	Air flow (foot <sup>3</sup> /min)	Oil volume (US gallon)	Weight (lb)	Part number
Lubricator 43 (1 in. NPT)	1	32-300	0.34	6.6	8900 0050 07

## CP airolene plus tool oil

### Metric

Description	Oil volume (l)	Part number
5 l container	5	8099 0202 49
4 x 5 l container	20	8099 0202 51

### Imperial

Description	Oil volume (US gallon)	Part number
1.32 US gallon container	1.32	8099 0202 49
4 x 1.32 US gallon container	5.28	8099 0202 51

## CONSTRUCTION EQUIPMENT & SUPPLY COMPANY

12650 West 64th Avenue; Unit E248

Arvada, Colorado 80004

Telephone: (303) 431-9929 FAX: (303) 425-5792 E-Mail: COEQS@hotmail.com

Websites: www.sand-blasters.net & www.coeqs.com

**CONSTRUCTION EQUIPMENT & SUPPLY COMPANY**

**12650 West 64th Avenue; Unit E248**

**Arvada, Colorado 80004**

Telephone: (303) 431-9929 FAX: (303) 425-5792 E-Mail: COEQS@hotmail.com

Websites: [www.sand-blasters.net](http://www.sand-blasters.net) & [www.coeqs.com](http://www.coeqs.com)

**CONSTRUCTION EQUIPMENT & SUPPLY COMPANY**  
**12650 West 64th Avenue; Unit E248**  
**Arvada, Colorado 80004**  
Telephone: (303) 431-9929 FAX: (303) 425-5792 E-Mail: COEQS@hotmail.com  
Websites: [www.sand-blasters.net](http://www.sand-blasters.net) & [www.coeqs.com](http://www.coeqs.com)



**Chicago  
Pneumatic**

**CONSTRUCTION EQUIPMENT & SUPPLY COMPANY**

**12650 West 64th Avenue; Unit E248**

**Arvada, Colorado 80004**

Telephone: (303) 431-9929 FAX: (303) 425-5792 E-Mail: [COEQS@hotmail.com](mailto:COEQS@hotmail.com)

Websites: [www.sand-blasters.net](http://www.sand-blasters.net) & [www.coeqs.com](http://www.coeqs.com)

**2012-12 | No. 9800 1354 01**

© Copyright Atlas Copco Construction Tools AB | KALMAR • SWEDEN